



# Secrets of *Petaluma*

## Eat

- **Anna's Seafood** (Fresh Fish Market and the best Ahi Poke)
- **Bright Bear Bakery** (Cronuts & so much more)
- **Della Fattoria Bakery**
- **Two-Niner Diner** (Great view of airplanes taking off)
- **Green String Farm**
- **Thistle Meats** (Thick cuts)
- **Marin French Cheese Company**
- See backside for more restaurants!

## Drink

- **La Dolce Vita Wine Lounge**
- **Acre Coffee** (3 locations)
- **The Block** (Food trucks and beer garden)
- **Petaluma Coffee Company**
- **Lagunitas Brewery**
- **Hen House Brewery**
- **Griffo Distillery** (Did anyone say gin or hand sanitizer?)
- **Adobe Winery**

## Be Merry

- **Farmer's Market** (Tuesday Mornings)
- **Art Galleries & Historic Museum**
- **Mystic Theatre**
- **Phoenix Theatre**
- **Petaluma Arts Center**
- **McEvoy Ranch** (Olive Oils & Wines)
- **Ride the SMART Train**
- **Copperfield's Books**

## Annual Events

- **Butter and Egg Days Parade - April**
- **Veteran's Day Parade - November** (The largest in Northern California)
- **Sonoma-Marin Fair - June** (World-famous Ugly Dog Contest!)
- **Rivertown Revival - July** (Music, food, & top hats!)
- **Petaluma Craft Beer Festival - September**

## Take a Hike

- **Helen Putnam Park** (Incredible trails & views)
- **Schollenberger Park** (Bird watching, too)
- **Adobe State Historic Park** (Built in 1836)
- **Olompali State Historic Park**
- **D Street Mansions** (So fun on Halloween)
- **Taylor Mountain**
- **Trione-Annadel State Park**

## Just Up (Or Down) The Road

### To the South:

- Angel Island
- Mount Tam
- Stinson Beach
- San Francisco
- Golden Gate Bridge

### To the North:

- Healdsburg Town Square
- Green Music Center/Sonoma State
- Safari West
- Gravity Hill off Lichau Road (Coast uphill!)

### To the West:

- Bodega Bay/Shell Beach
- Tomales Bay
- Point Reyes/Osteria Stellina
- Sonoma Coast State Park
- Dillon Beach
- Sebastopol's Barlow

### To the East:

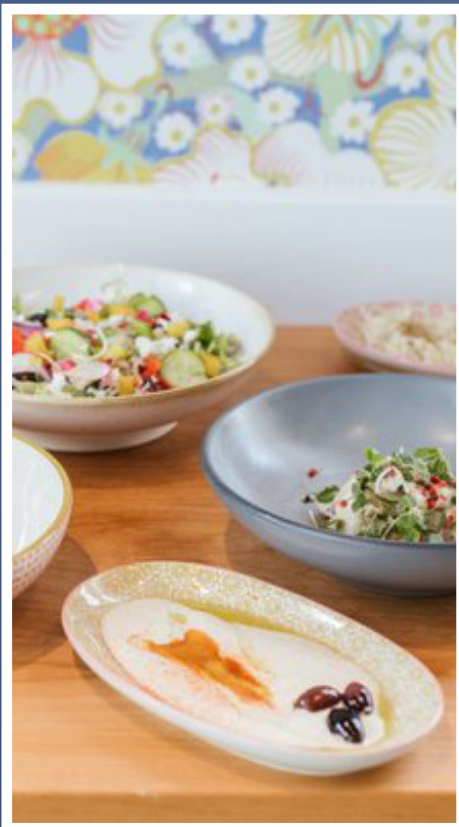
- Sonoma's Historic Plaza
- Napa's Oxbow Center
- Wineries (pretty much in all directions!)

Jeremy | 707-338-8821 – Peg | 707-953-5707

peg@pegking.com - www.pegking.com - @PetalumaKings

# *Must-Try* **Petaluma Restaurants**

- Alfredo's - 1426 E Washington Street
- April Pantry - 1000 Clegg Court
- Brewsters Beer Garden - 229 Water Street
- Cafe Giostra - 1390 N McDowell Blvd.
- Central Market - 42 Petaluma Blvd. N
- Chicago Pizza - 41 Petaluma Blvd. N
- Cucina Paradiso - 114 Petaluma Blvd. N
- Dempsey's - 50 E Washington Street
- El Roy's - 210 Edith Street
- McNear's Saloon - 23 Petaluma Blvd. N
- Mi Pueblo - 108 Kentucky Street
- Pub Republic - 3120 Lakeville Hwy
- Real Doner - 307 F Street
- Risibisi - 154 Petaluma Blvd. N



- Rosen's 256 North - 256 Petaluma Blvd. N
- Sake 107 - 107 Petaluma Blvd. N
- Seared - 170 Petaluma Blvd. N
- Stockhome - 220 Western Ave.
- Street Social - 29 F Petaluma Blvd. N
- Sugo Trattoria - 5 Petaluma Blvd. S
- Taps - 54 E Washington Street
- The Shuckery - 100 Washington Street
- Trattoria Roma - 140 2nd Street
- Volpi's - 124 Washington Street
- Water Street Bistro - 100 Petaluma Blvd. N
- What a Chicken - 706 E Washington Steet
- Wild Goat Bistro - 6 Petaluma Blvd. N
- Wishbone - 841 Petaluma Blvd. N